

Designing Intelligent, Viable and Sustainable Transportation Solutions



Dr Dorothy Chan, Hon. Fellow CILT
WiLAT Global Advisor
International Past President
The Chartered Institute of Logistics and Transport



The Chartered
Institute of Logistics
and Transport

Saturation



Cannot build ourselves out of congestion

Example: China cities

- Rapid urban growth
- 1 million cars in 1994 to 33 million in 2008
- Serious traffic congestion
- Bus speeds fell by 60%
- Bus punctuality fell by 88%



Beyond Saturation



Congestion: Major Contributors

- Increase in private vehicles
- Incomplete public transport network
- Inefficient management of road space
- Regulatory regime and policies

Impact on Environment



- Increase in greenhouse gas emission
- Repeat the predicament of developing countries
- Ineffective use of resources
- Not achieving sustainability



Hong Kong Transport Strategy for the Future

1. Better integration of transport and land use planning
2. Better use of railways as the backbone of our passenger transport system
3. Better public transport services and facilities
4. Better use of advanced technologies in transport management
5. Better environmental protection



Sustainable Transport System

- Meeting basic access needs of individuals
- Affordable transport system which operates efficiently, provides choice and supports economy



Importance of Public Transport

- Constitute almost 90% of passenger trips
- An efficient system **without direct subsidy** (except ferry)
- Over 12.6 million trips a day
- Three main carriers:
 - **Railway** 5.1 million passengers a day
 - **Franchised buses** 3.9 million passengers a day
 - **Public light buses** 1.9 million passengers a day



Expanding Railway Network

Make railways as the backbone of passenger transport system



The Chartered
Institute of Logistics
and Transport

Expansion & Improvement of Public Transport

Hong Kong: R+P Model

- Property development right on top of railway stations
- Promote urban mobility
- Convenience from home to work and economic activities



R+P Model

- Railway and the community
- Integrated development clusters around railway stations



Source: Wikipedia user -Wing1990hk



The Chartered
Institute of Logistics
and Transport

Bus & Public Light Bus

5.8 million passengers/day



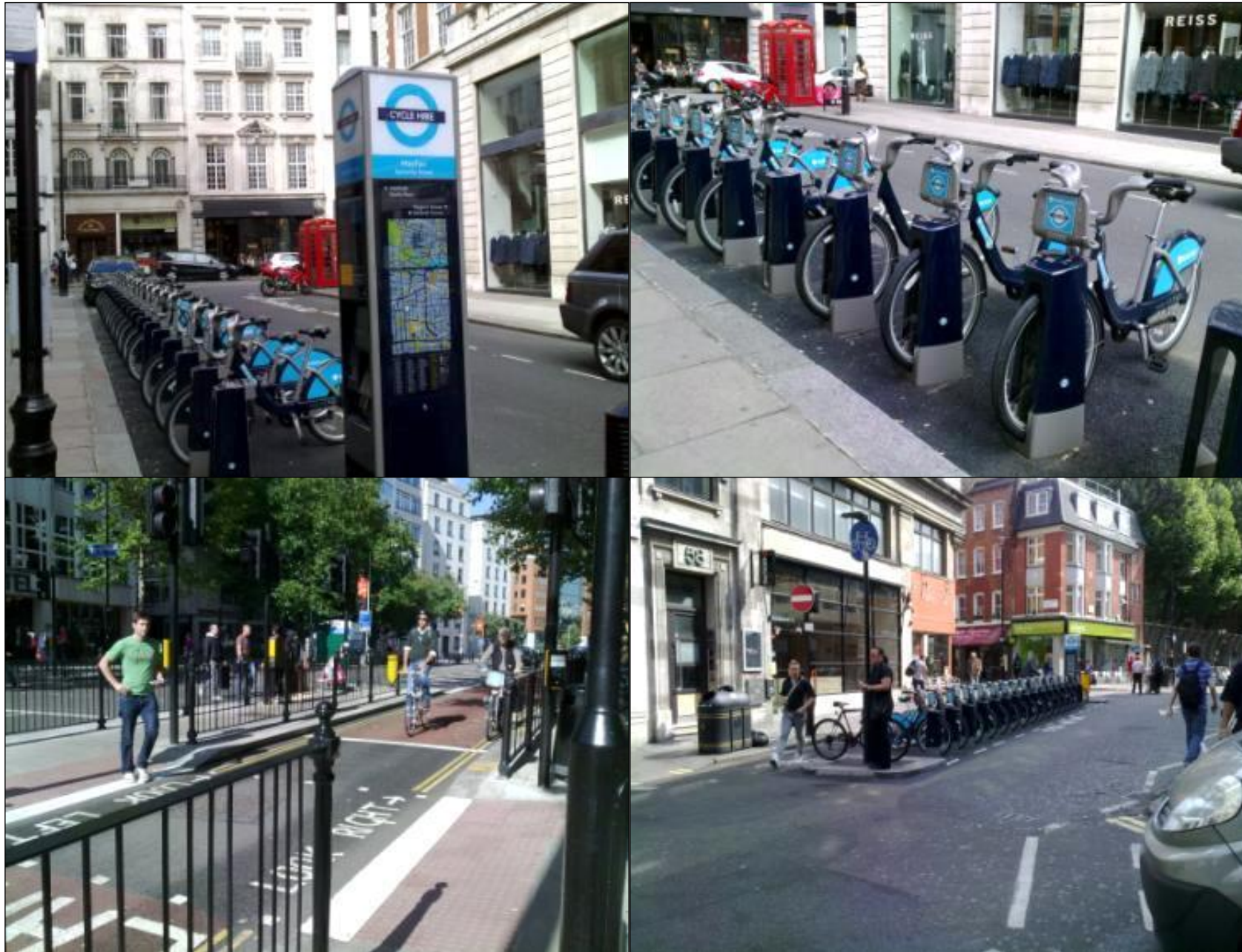
Intermodal Coordination

- Level playing field
- Clear definition of the roles of different transport modes
- Efficient operation
- Avoid wasteful competition
- Economic use of road space

Smart City



London Bicycle Hire Scheme



Priority Signals



Electronic Road Pricing

- Singapore

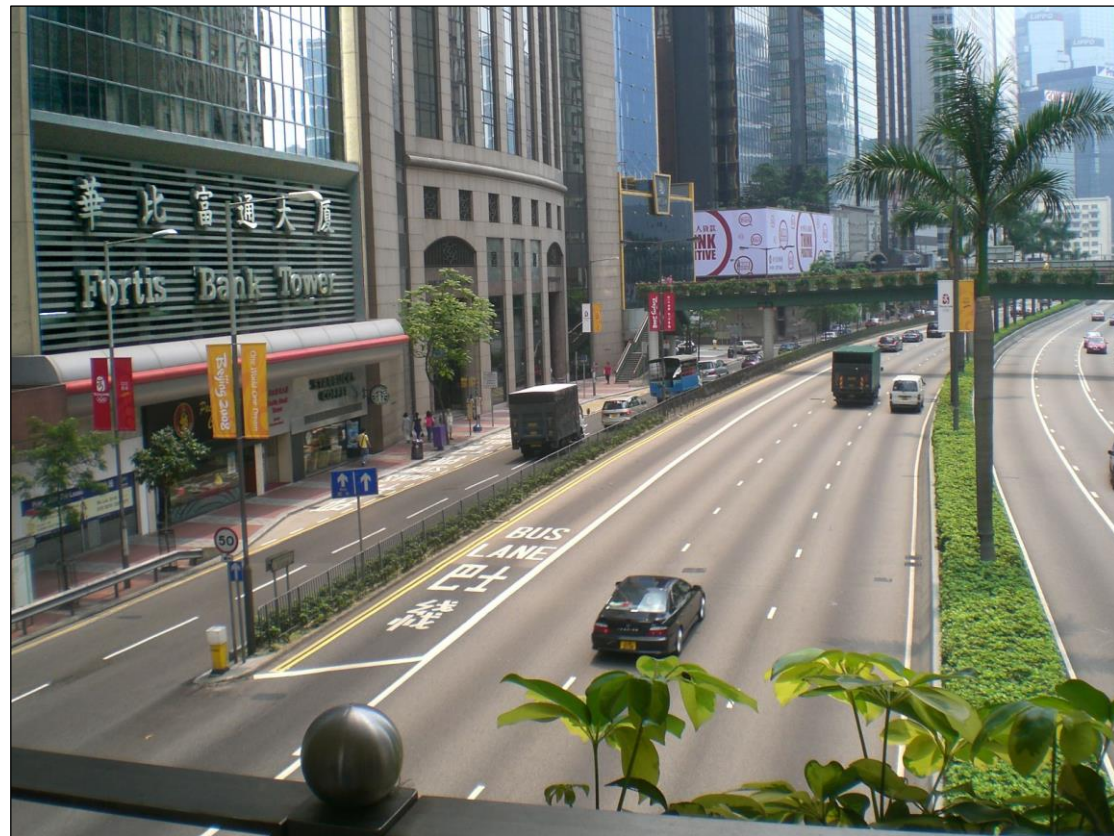


Park-and-ride in Tokyo



Bus Lanes

Hong Kong



Singapore

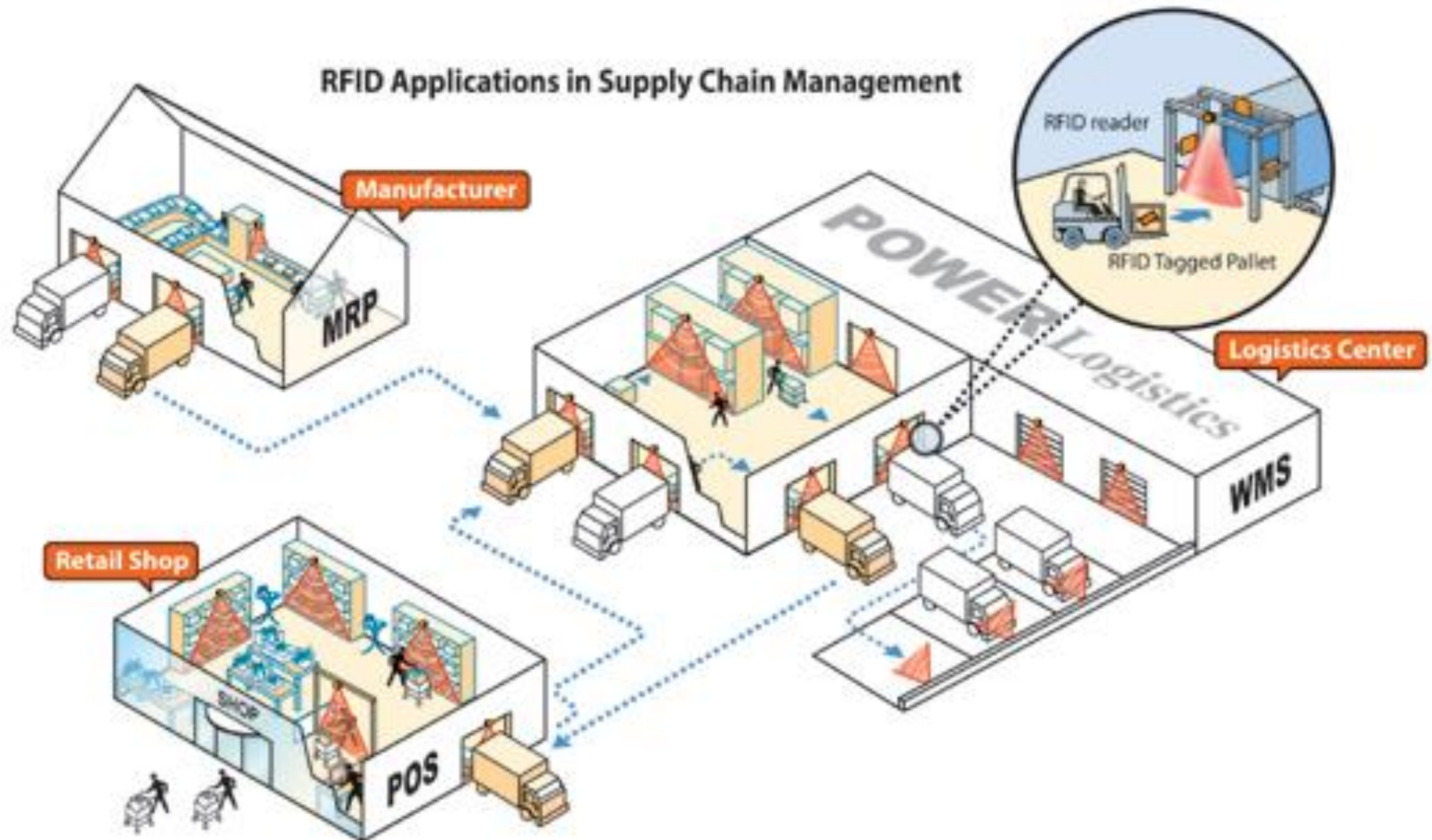




Gangding BRT station, after the BRT implementation



RFID Technology



Source: PCCW Solutions



The Chartered
Institute of Logistics
and Transport

JD.com's Drone Delivery

- Deliver online purchases
- Up to 10kms
- From local distribution centre to a nearby village





The Chartered
Institute of Logistics
and Transport

Thank You



The Chartered
Institute of Logistics
and Transport